



Reg. No. 34Q11381



MPM

(Company No : 691735-V)

MICRO PRECISION MACHINING SDN. BHD.

COMPANY PROFILE



MICRO PRECISION MACHINING SDN BHD

(Company No: 691735-V)

No 2, Jalan Mega A, Taman Industri Mega,
43500 Semenyih, Selangor
TEL : 03-87278803
FAX : 03-87278839



MPM, YOUR PARTNER FOR MANUFACTURE

MPM PARTNER FOR MANUFACTURE

- MOTTO

“EXCELLENCE IN SERVICES & MANUFACTURING”

- COMPANY VISION

EXCELLENCE IN PRODUCT DELIVERING SERVICES TO
OUR CUSTOMER.

- COMPANY MISSION

PROVIDE TOTAL SOLUTIONS FOR CUSTOMER
SATISFACTION.

QUALITY POLICY

- We are involved in technical designing and manufacturing of precision engineering parts for power plant, automotive, electronics and dental parts. Thus, it is our commitment to achieve customer's satisfaction with quality products and excellent services.
- It is our commitment to comply with ISO 9001:2008 and statutory and regulatory requirements and continually improve its effectiveness.
- We shall establish quality objectives at relevant functions in the company.
- The quality policy and quality objectives shall be reviewed periodically for continuing suitability.

QUALITY OBJECTIVE

Sales & Marketing

- To achieve at least 80% of the customer satisfaction survey results.
- However, to achieve 100% of the customer satisfaction for power plant and oil and gas product
- To achieve less than 2 cases of customer complain per month.

QA/QC

- For critical Parts : To achieve less than 25% of rejection rate.
- For non-critical parts : To achieve less than 5% of rejection rate.
- For power plant and oil and gas product : 0% rejection rate

Finance & Admin

- To achieve at least 75% of average rating for annual suppliers evaluation results.

Machining

- To achieve at least 90% of machine utilization.
- To achieve less than 10% of production rejection.

COMPANY DATA

Company Name	MICRO PRECISION MACHINING SDN BHD
COMPANY NO	691735-V
Establishment	16 th May 2005
Business Address	No.2, Jalan Mega A, Taman Industri Mega, 43500 Semenyih, Selangor Darul Ehsan
Fax	03-87278839
Tel	03-87278803
Bank Account	100810015305 AFFIN BANK SERI KEMBANGAN
Website	www.mpmsb.com.my
E-mail	jaafar@mpmsb.com.my
Capital	RM 500,000.00
Director	Ja'afar bin Othman
Employee	24 persons (Year 2017)

COMPANY BUSSINESS

MPM is incorporated in 16th May 2005 as manufacturer, sales, repair and producing mass production job. We aim to utilize our engineering know-how in industrial market for the benefit of both parties. **MPM** provides all kind of services to fulfill customers' requirements. Services provided involves:

1. CNC auto lathe (mass production)
2. Turning Part
3. Jig & Fixture
4. Fabrication
5. Mould tool & die



Our business is on:

1. Technical designing and manufacturing of precision engineering parts for power plant, automotive, electronics and Dental parts.
2. Power plant parts fixing, site machines modification, service and repair.
3. We have done retrofit of machine and modification for CNC Milling, CNC Lathe, Routers and Wire Cut Machine.
4. We provide training to college and universities for lecturers and students regarding operating and maintenance of machines
5. From our past experience, we shall be capable of producing oil and gas parts

As part of service to the community; we train students from local college, polytechnic and universities.

With a good experience and reputation in machineries, we managed to expand the number of customers from year to year.

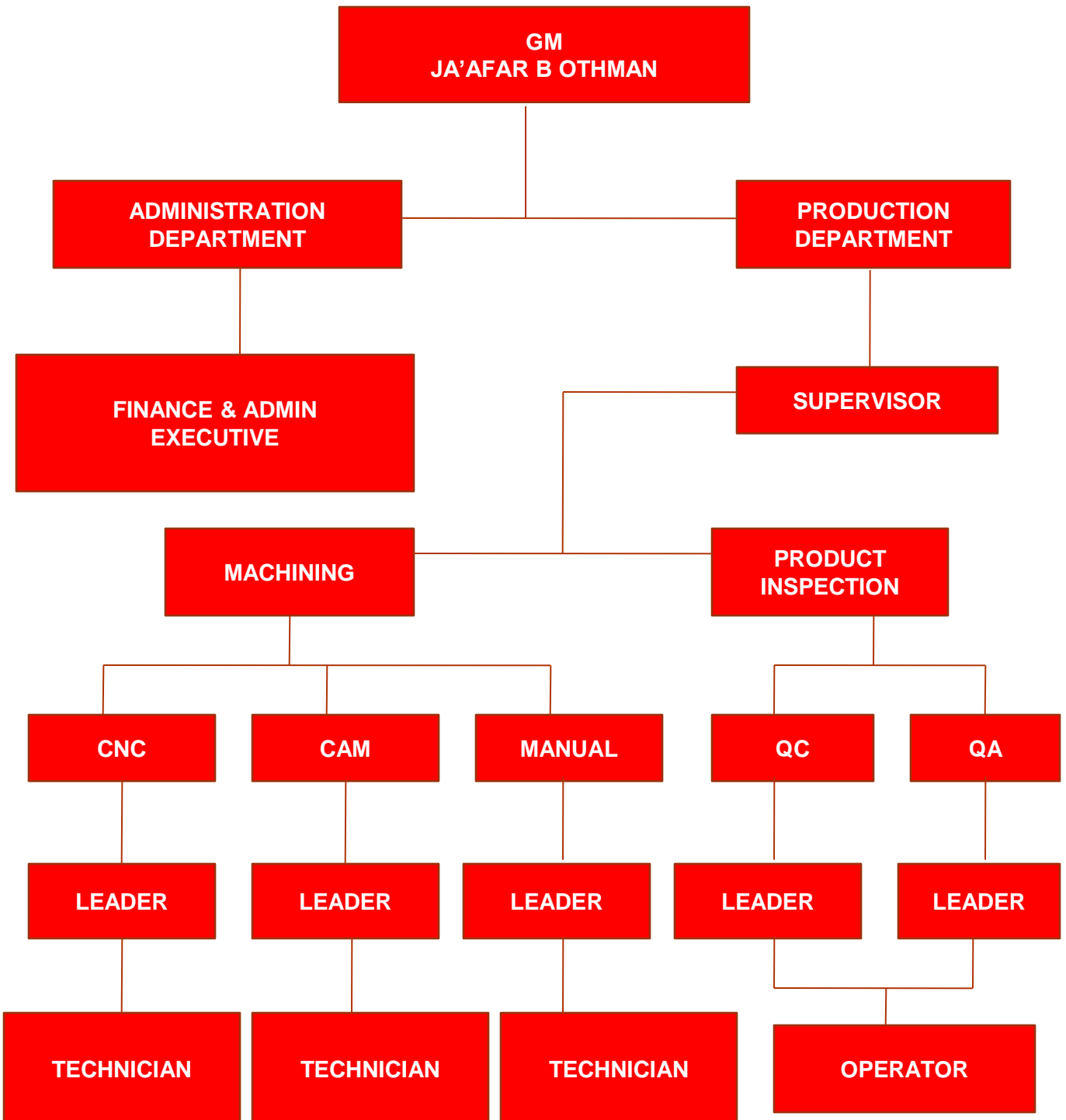
MAIN CUSTOMERS

- **TNB REPAIR & MAINTAINANCE SDN.BHD.**
- **OHTA PRECISION (M) SDN BHD**
- **MICROMECHANICS SDN BHD**
- **DAIJINTECH SDN BHD**
- **AMT ELECTRONICS SDN BHD**
- **ALUM MAJU SDN BHD**
- **INDKOM ENGINEERING SDN.BHD**
- **GULF INDUSTRIES SDN. BHD.**
- **TENAGA SWITCHGEAR (M) SDN. BHD.**
- **J FOONGTECHNOLOGIES SDN BHD**
- **ZHOU SPECIALIST DENTAL SURGERY**
- **SAPURA THALES ELECTRONIC SDN BHD**

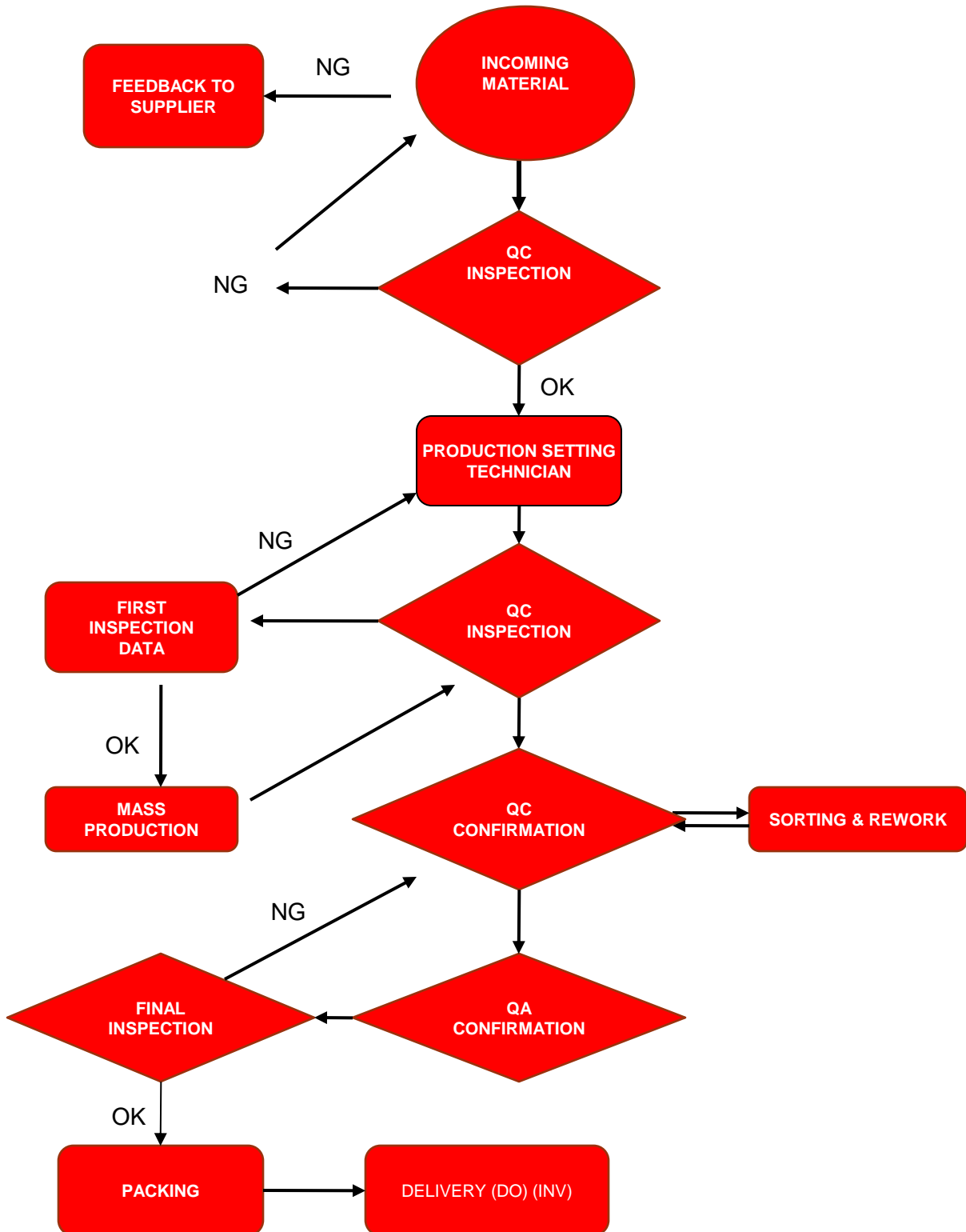
GOVERNMENT AGENCIES:

- **MARDI**
- **KOLEJ KOMUNITI**
- **KOLEJ KEMAHIRANTINGGI MARA**
- **POLYTECHNIC**
- **UNIVERSITES**

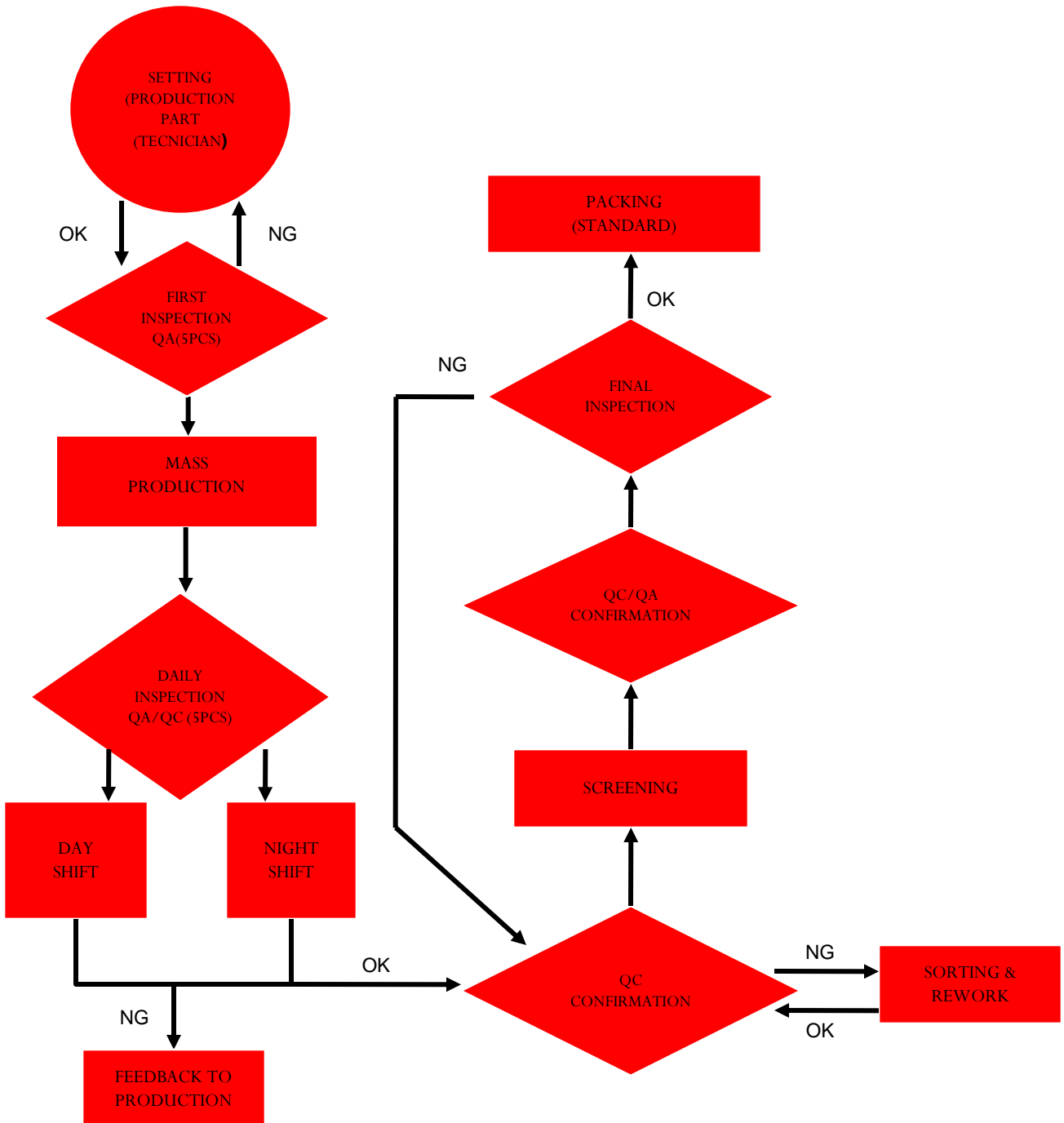
ORGANIZATION CHART



FLOW CHART



QUALITY CONTROL FLOW CHART



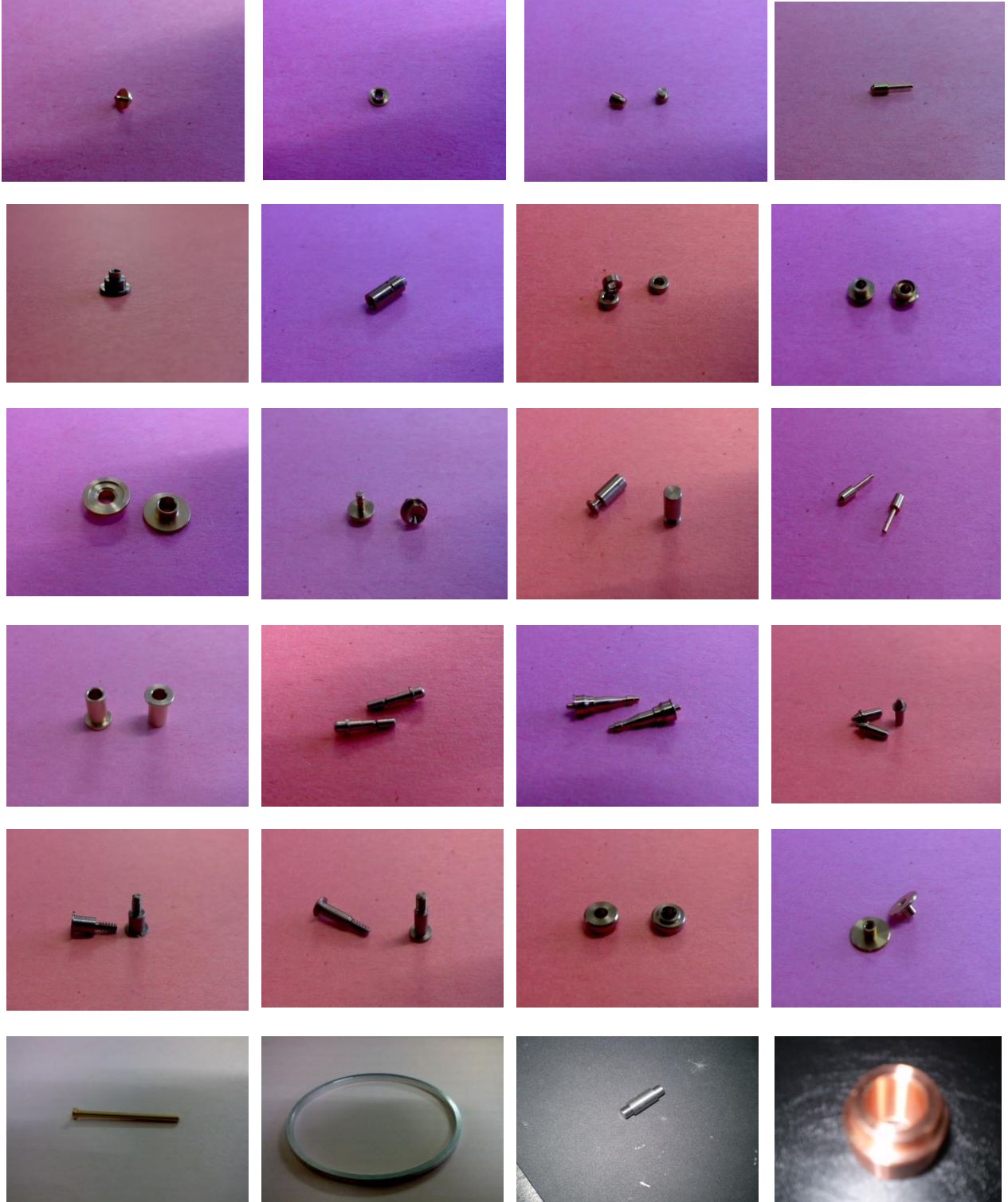
SERVICES/PRODUCTS RANGE



Our highly skill engineers and technicians hands on to fulfill our customers satisfaction. We are committed to our business principal/motto “Excellence In Services & Manufacture“ so that we will provide better services and product quality to our customer. We can produce engineering parts for medical , power station , Oil & Gas electronics , automotives, and etc.



SERVICES/ PRODUCTS RANGE (PIN, SCREW , SHAFT ETC)



SERVICES/PRODUCTS RANGE , REVESE ENGINEERING , FABRICATION & SIDE MACHINING



BOLT



NUT



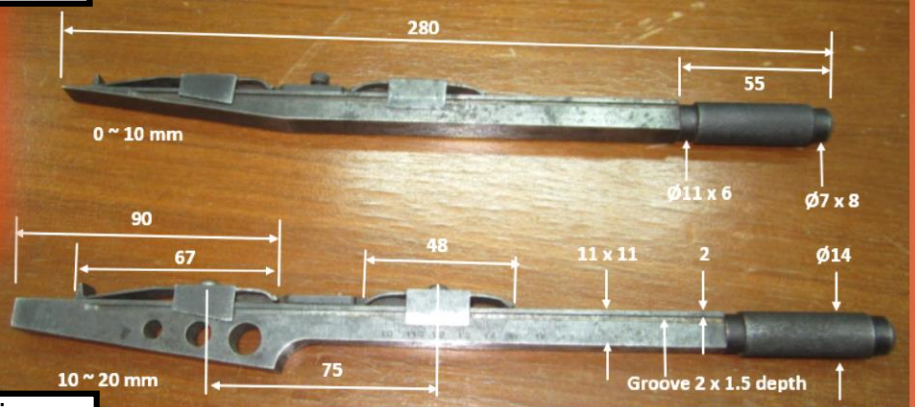
Side Machining process for
 fixing Coupling bolt



Side Machining process for
 fixing Coupling bolt



Porwer Station Sparepart



Special Tool Custome Macining

LIST OF MACHINES



Reg. No. 34Q11381

MACHINE LIST LOCATED IN KAJANG

MAKER / TYPE	DESCRIPTION	QUANTITY
(1) FUKUSEIKI	CNC LATHE Machine	1
(2) KITAMURA	CNC LATHE Machine	3
(3) CINCOM CITIZEN R04	CNC AUTO LATHE	2
(4) CINCOM CITIZEN L10	CNC AUTO LATHE	1
(5) TSUGAMI B018	CNC AUTO LATHE	2
(6) TSUGAMI B020	CNC AUTO LATHE	5
(7) NOMURA	CAM AUTO LATHE	15
(8) MLI	Manual Milling Machine	2
(9) MLI	Manual lathe Machine	1
(10) MLI	Manual lathe Machine Ø600 x 3 mtrs	1

MACHINE LIST LOCATED IN PENANG

(11)	SODICK AM3L	EDM Machine	3
(12)	DMG DMU50	DMG CNC Milling Machine	6
(13)	CTX 310 Gildesmeister	CNC Lathe Machine	3
(14)	FUNUC	Wire Cut Funuc Machine	3
(15)	OKAMOTO	Surface Grinding Machine	3

PICTURE OF MACHINES LISTED



CNC Lathe



CNC Auto Lathe Machine
 CINCOM CITIZEN



CNC Auto Lathe
 Machine Thugami



CNC Auto Lathe Machine



EDM Machine



CNC Milling Machine



CNC Lathe Machine CTX 310 Gildesmeister



Wire Cut Funuc Machine



Surface Grinding Machine

PICTURE OF MACHINES EQUIPMENT LISTED



Lathe Machine



Cam Machine



Milling Machine



Bench Tool Grinder



Welding Set



Microskop QC Dept



Profile Projector

OTHER LIST OF MACHINERIES

GRINDING MACHINE

- | | | |
|-------------------|---------|------------------|
| ▪ OKAMOTO – 450DX | 2 units | Year 2000 & 2001 |
| ▪ OKAMOTO – 52ST | 1 unit | Year 2000 |
| ▪ Made in JAPAN | | |

WIRE CUT MACHINE

- | | |
|---|--------|
| ▪ FANUC – ALPHAR-1ic
(WILL REPLACE OTHER MACHINES) | 1 unit |
| ▪ Table size – 520 x 370 x 310(z-axis) | |
| ▪ Accuracy +/- 0.003 | |
| ▪ Made in JAPAN | |

CHARMILLE TECHNOLOGY 290

- | | | |
|--|--------|-----------|
| | 1 unit | Year 1999 |
| ▪ Table size – 400 x 300 x 250(z-axis) | | |
| ▪ Accuracy +/- 0.003 | | |
| ▪ Made in SWITZERLAND | | |

EDM MACHINE

- | | | |
|--|--------|-----------|
| ▪ FINE SODICK – Mold Maker 3 | 1 unit | Year 1992 |
| ▪ Table size – 300 x 200 x 200(z-axis) | | |
| ▪ Made in JAPAN | | |

SUPER DRILL MACHINE

- | | | |
|-------------------------|--------|-----------|
| ▪ CASTEX – MD20 | 1 unit | Year 2003 |
| ▪ Min. diameter – 0.1mm | | |
| ▪ Max. diameter – 1.5mm | | |
| ▪ Made in TAIWAN | | |

QC EQUIPMENTS

PROFILE PROJECTOR

- DELTRONIC – 216 2 units
- Made in USA & Mitutoyo JAPAN)

DIGITAL HEIGHT GAUGE

- TRIMOS – V300++ 4 units
- Made in SWITZERLAND

MICROSCOPE

- OLYMPUS/NIKON 8 units
- Max. zoom – 200x
- Made in JAPAN

STANDARD NORMAL CHECKING EQUIPMENTS

- Digital micrometer from Mitutoyo 10 units
- Digital gauge from Sylvac 3 units
- Dial test indicator from Tesa 5 units
- Caliper (Tesa & Mitutoyo) 6 units
- Block gauge (grade O) 2 sets

GENERAL INFORMATION

MAJOR MATERIAL SUPPLIER

- BOHLASIA STEEL SDN BHD
- SWISS PROFILE (M) SDN BHD
- HWA GUAN METAL
- ALWIRA JAYA SDN. BHD.
- PENG HONG HARDWARE SDN. BHD.
- TCK METAL HARDWARE
- WENG ZENG SDN BHD
- TSA INDUSTRIES SDN BHD
- KAMCO ALUMINIUM SDN BHD
- ASSAB STEEL SDN BHD

CAPABILITIES

- We are capable of doing micron jobs ranging from tool steel to tungsten carbide material. For semi precision parts such as machine parts or jig & fixture for assembly purposes which use more non-metallic material such as PVC, ULTEM, DELRIN, TEFLON and many more.
- Our current manpower at working place are 24 persons.

OBJECTIVE

- Our objective are to ensure quality, durability and follow customer requirement. We are responding to the industries call for higher productivity with lower cost and customer satisfaction is our philosophy.